

A photograph of a courtyard in front of a yellow building. The courtyard is paved with light-colored stone tiles and contains several potted plants, including a large tree on the left and a large terracotta pot in the foreground. The building has dark shutters and a glass door on the right. The text 'FOR RENT IN PORTA ROMANA MILAN' is overlaid in the center.

FOR RENT IN PORTA
ROMANA MILAN

MILANO VIA MURATORI 10

DESCRIZIONE

For rent in Porta Romana Milan Rented Milan | Via Muratori 10 | Loft-style one-bedroom apartment for rent In the authentic heart of Porta Romana, just a few steps from Piazza Medaglie d'Oro, we are offering a truly distinctive apartment on the second floor of a quiet, well-kept inner ...

1.500 € | 55 mq | 2 locali

 *i m m o b i l i a r e*
SANTALFREDO

Telefono: 039 690 81 37 - Email: info@immobiliariesantalfredo.it



FOR RENT IN PORTA ROMANA MILAN

... courtyard. Furnished apartment The entrance opens onto a welcoming living area with open-plan kitchen and fireplace, plus a handy anteroom and a windowed bathroom ...

Le necessità, i sogni legati alla casa cambiano e per ognuno sono diversi. La vera abilità è quella di trovare la soluzione per soddisfare ognuno di queste persone.

... complete with a laundry corner. A masonry staircase leads to the mezzanine level, where you'll find the double bedroom with walk-in wardrobe, custom cabinetry and integrated ...

is immobiliare
SANTALFREDO

Telefono: 039 690 81 37 - Email: info@immobiliariesantalfredo.it



DESCRIZIONE

... shoe storage. A large skylight above the bed floods the room with natural light and provides an enchanting view of the sky. Key details Rented fully furnished – ready to move in Practical overhead storage space Independent heating and installed air-conditioning Energy class: F – EP gl,nren 262.89 kWh/m² year Availability: immediate Monthly rent: €1,500 Service charges: €100/month ...

Immobiliare Santalfredo può consigliarti i passi migliori per concretizzare l'acquisto o la vendita di un immobile, guidandoti nel tuo investimento immobiliare in modo attento ed produttivo.

... (subject to adjustment) Set in a private, select context with a half-day concierge service—an added value that ensures order, security and discretion. Location & transport The apartment is superbly located: the M3 “Porta Romana” metro stop is only a few minutes’ walk away, and several tram and bus lines provide swift connections to the city centre, universities and Milan’s main thoroughfares. Contact us for further ...



Telefono: 039 690 81 37 - Email: info@immobiliariesantalfredo.it



DETTAGLI AGGIUNTIVI

1.500 € | 55 mq | 2 locali

- Anno di costruzione | 1920
- Condizione immobile | Good
- Anno di ristrutturazione | 2019
- Numero livelli | 2
- Piano | 2
- Totale piani edificio | 2
- Numero locali | 2
- Ingresso | Si
- Soggiorno | Si
- Cucina | Angolo Cottura
- Tipo riscaldamento | Autonomo
- Climatizzazione | Si
- Portineria | Yes
- Ascensore | No
- Classe energetica | F 262,83



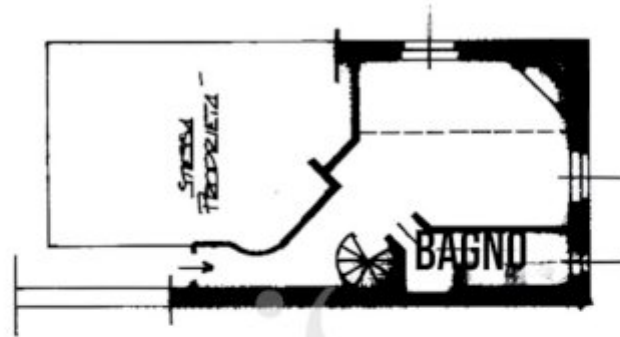
Telefono: 039 690 81 37 - Email: info@immobiliariesantalfredo.it

GALLERIA IMMAGINI

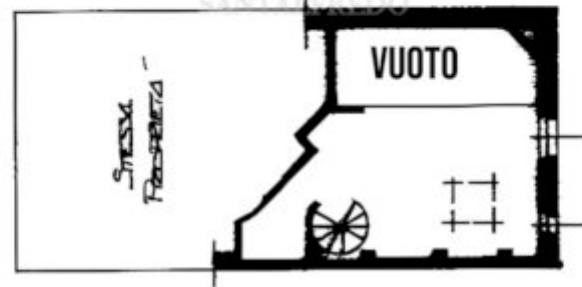


PLANIMETRIA

PIANO SECONDO



PIANO SOPPALCO





Immobiliare Santalfredo
Via Remo Brambilla, 7
20863 Concorezzo (MB)

Telefono: 039 690 81 37

Email: info@immobiliariesantalfredo.it

Sito Web: <https://www.immobiliariesantalfredo.it>